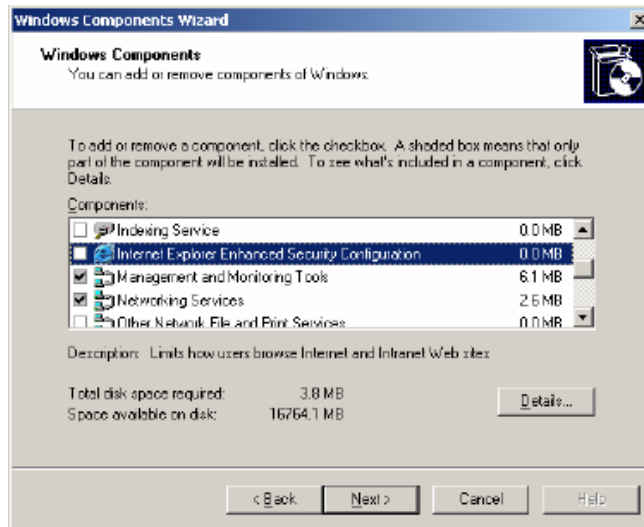


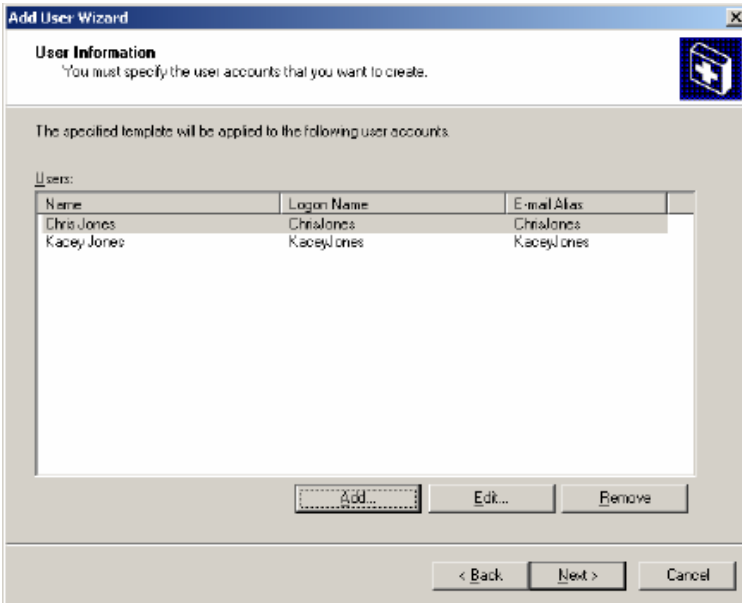
Project Server 2003 Install on SBS 2003 – Courtesy of Chris Jones – All rights reserved by the Author

1. Start by removing Internet Explorer Enhanced Security



Uncheck the Internet Explorer Enhanced Security Configuration and click next

2. Next go to Start, Server Management, Users. Click add Multiple Users. Note: This step will only be performed on a new install or when you don't have any administrators. We will now add two Users with administrator template.



3. This next step is also a clean install of Microsoft SQL Server, following setup instructions on Premium Technologies CD. I have posted these directions below, but you will find them in the root of Premium Technologies CD. Follow directions exactly as they appear.

Completing Setup for Microsoft Windows Small Business Server Premium Technologies

After completing Windows Small Business Server 2003 Setup, you can use the Premium Technologies disc to install Microsoft® SQL Server 2000 and/or Microsoft Internet Security and Acceleration (ISA) Server 2000. A Microsoft FrontPage® 2003 disc is also included.

- You can install SQL Server 2000 as your database for a business application. Additionally, you can upgrade the instance of Microsoft SQL Server Desktop Engine (MSDE) used by Windows SharePoint™ Services if you want to be able to search document libraries in your company's internal Web site. See [Installing SQL Server 2000](#) later in this document.
- You can install ISA Server 2000 as the firewall for your local network. See [Installing ISA Server 2000](#) later in this document.
- You can install FrontPage 2003 on one computer in the Windows Small Business Server network so that you can create or modify your Internet Web site. See [Installing FrontPage 2003](#) later in this document.

Important

- It is strongly recommended that you disconnect the server from your Internet connection until after you have set up Premium Technologies.
- You must be logged on as the Administrator account or another account that is a member of the Domain Admins security group to install SQL Server 2000 or ISA Server 2000.

Installing SQL Server 2000

You can [install a new instance of SQL Server 2000](#), [upgrade the instance of MSDE used for Windows SharePoint Services](#), or both.

Before installing SQL Server, review the following points:

- As part of installing each instance of SQL Server 2000, you must install SQL Server 2000 Service Pack 3a (SP3a), which addresses known security issues, including the Slammer worm. To do so, follow the instructions provided later in this document.

- Do not upgrade the instance of MSDE installed for Monitoring (SBSMONITORING), as it is not supported.
- If you are installing a new instance of SQL Server and you have an existing SQL Server installation, or if you are installing SQL Server in a language different from the language used by the client computers connecting to the database, or if you have an application that depends on settings from a previous version of SQL Server, you must complete a custom Setup and specify collation settings. For information about collation settings, see [SQL Server Collation Settings](#) later in this document.
- To review the SQL Server 2000 release notes, open *D:\SQL2000\Readme.txt* on the Premium Technologies disc, where *D* is the letter of your CD drive. To review the SQL Server 2000 SP3a release notes, open *D:\SQL2000_SP3\SP3readme.htm* on the Premium Technologies disc, where *D* is the letter of your CD drive.

To install a new instance of SQL Server 2000

1. From the Autorun page of the Premium Technologies disc (*D:\Setup.exe*, where *D* is the letter of your CD drive), click **Install Microsoft SQL Server 2000**.

Note

- If Windows Small Business Server 2003 came preinstalled on your server, your original equipment manufacturer (OEM) may have created a shortcut on the desktop for installing the Premium Technologies.
2. When the **SQL Server 2000 SP2** and below message appears, click **Continue**. The issue is resolved after you install SQL Server 2000 SP3a later in this document.
 3. On the **Welcome** page, click **Next**.
 4. On the **Computer Name** page, you must accept the default of **Local Computer**.
 5. On the **Installation Selection** page, click **Create a new instance of SQL Server, or install Client Tools**.
 6. On the **User Information** page, click **Next** to accept the default information.
 7. On the **Software License Agreement** page, review the licensing agreement. To continue, you must accept the agreement.
 8. If this is the first instance of SQL Server that you are installing, the **CD-Key** page appears. Enter your Windows Small Business Server 2003 product key, which is found on the back of the disc case.

Note

- If Windows Small Business Server 2003 came preinstalled on your server, the product key is located on the Certificate of Authenticity (COA). The COA is a multicolored label located on the side or top of your computer.

9. On the **Installation Definition** page, accept the default of **Server and Client Tools**.
10. On the **Instance Name** page, accept the default of **Default** or create a specific named instance.
11. On the **Setup Type** page, accept the default of **Typical**, unless you need to use specific collation settings or other specific SQL Server installation options.

You can also specify where to install the program and data files. It is recommended that you choose a drive that has enough free disk space to support folder growth. If you have multiple drives on your server, it is recommended that you save your data to a drive other than the one where the operating system is installed. Storing data on a separate drive improves system performance and simplifies backup and recovery.

You must perform a custom Setup and specify collation settings (rather than using the default values) if: (1) you have an existing SQL Server installation, (2) you are installing SQL Server in a language different from the language used by the client computers connecting to the database, or (3) you have an application that depends on settings from a previous version of SQL Server. To perform a custom Setup, click **Custom** on the **Setup Type** page, and then follow the instructions.

For more information about collation settings, see [SQL Server Collation Settings](#) later in this document.

12. On the **Services Accounts** page, you can use the default of **Use a Domain User account**, and then specify the password for your administrator account. Optionally, an even more secure method is to create a new account specifically for accessing SQL Server.

To create a new account for SQL Server, use the Add User Wizard in Server Management. Click **Start**, click **Server Management**, and then click **Users**. In the details pane, click **Add a user**. When prompted for the template selection, select **Do not use a template to define user settings**, and then specify **Administrators** for the security group membership. Do not select the options to create a computer or allocate disk space.

Note

- If you enabled password policies for the domain, the password for the services account expires when a password reset is required for all users. You must reset the services account password and then update the password for SQL Server. You must also update the account information if you manually change the user name or password for the account.

To reset the services account password, use the **Change User Password** task on the Manage Users taskpad in Server Management. To update the password for SQL Server, click **Start**, click **Run**, and then type **Services.msc**. Double-click the **MSSQLServer** service, click the **Log On**

tab, and then update the account information. Then update the account information for the **SQLSERVERAGENT** service.

13. On the **Authentication Mode** page, accept the default of **Windows Authentication Mode**.
14. On the **Start Copying Files** page, click **Next** to begin the installation of SQL Server
15. On the **Setup Complete** page, click **Finish**.
16. You must now continue to the next procedure to apply SQL Server SP3a to the instance of SQL Server that you just installed.

To install SP3a to the new instance of SQL Server

1. From the Autorun page of the Premium Technologies disc (*D:\Setup.exe*, where *D* is the letter of your CD drive), click **Install SQL Server 2000 Service Pack 3a**.

Note

- When you run SP3a Setup, if you receive a message that the Scm.exe file is in use, restart your server, and then begin installing SP3a.
2. On the **Welcome** page, click **Next**.
 3. On the **Software License Agreement** page, review the licensing agreement. To continue, you must accept the agreement.
 4. On the **Instance Name** page, accept the default of **Default** unless in the previous procedure you specified an instance name.
 5. On the **Connect to Server** page, accept the default of **The Windows account name I use to log on to my computer with (Windows authentication)** unless you specified a different authentication mode in the previous procedure.
 6. When the message that the SA Password is blank appears, it is recommended that you provide a strong password for this account. A strong password is between 6 and 127 characters, and uses uppercase and lowercase letters, numbers, and other characters, such as *, ?, and \$.
 7. Review the **Backward Compatibility Checklist** message. If you must modify the SP3a security enhancements, select the appropriate options. For details about each option, click **Help**. Click **Continue** once you have reviewed the security enhancements.
 8. When the **Error Reporting message** appears, you can select **Automatically send failed error reports to Microsoft**.
 9. On the **Start Copy Files** page, click **Next**.
 10. When a message appears prompting you to back up your databases, click **OK**. It is highly recommended that you complete a backup after installing Premium Technologies

11. On the **Setup Complete** page, click **Finish**.

Note

- If you receive the following error, you must restart your computer and then run the SQL Server 2000 Service Pack 3a Setup again:

"Error running script: sp3_serv_uni.sql(1) To exit the service pack installer, click OK."

12. Click **Start**, click **Run**, and then type **Services.msc**. If the MSSQLSERVER service is not started, right-click the service, and then click **Start**.

To upgrade the instance of MSDE used for Windows SharePoint Services

1. From the Autorun page of the Premium Technologies disc (*D:\Setup.exe*, where *D* is the letter of your CD drive), click **Install Microsoft SQL Server 2000**.

Note

- If Windows Small Business Server 2003 came preinstalled on your server, your original equipment manufacturer (OEM) may have created a shortcut on the desktop for installing the Premium Technologies.
2. When the **SQL Server 2000 SP2 and below** message appears, click **Continue**. The issue is resolved after you install SQL Server 2000 SP3a later in this document.
 3. On the **Welcome** page, click **Next**.
 4. On the **Computer Name** page, you must accept the default of **Local Computer**.
 5. On the **Installation Selection** page, click **Upgrade, remove, or add components to an existing instance of SQL Server**.
 6. If this is the first instance of SQL Server that you are installing or upgrading, the **CD-Key** page appears. Enter your Windows Small Business Server 2003 product key, which is found on the back of the disc case.

Note

- If Windows Small Business Server 2003 came preinstalled on your server, the product key is located on the Certificate of Authenticity (COA). The COA is a multicolored label located on the side or top of your computer.
7. On the **Instance Name** page, clear the **Default** check box if it is selected. In the **Instance name** box, select **SHAREPOINT**.

Important

- Do not upgrade the instance of MSDE installed for Monitoring (SBSMONITORING), as it is not supported.
8. On the **Existing Installation** page, accept the default of **Upgrade your existing installation**.
 9. On the **Upgrade** page, select the **Yes, upgrade my programs** check box.
 10. When a message appears prompting you to install additional components, click **Yes**.
 11. On the **Select Components** page, under the **SubComponents** column, select the **Full-Text Search** check box. If this is the first instance of SQL Server that you are installing, it is recommended that you also select the **Management Tools** component. Additionally, to get SQL Server documentation, you must select the **Books Online** component.
 12. On the **Start Copying Files** page, click **Next** to begin installing SQL Server.
 13. On the **Setup Complete** page, click **Finish**.
 14. You must now continue to the next procedure to apply SQL Server SP3a to the instance of SQL Server that you just installed.

To install SP3a to the SHAREPOINT instance of SQL Server

1. From the Autorun page of the Premium Technologies disc (*D:\Setup.exe*, where *D* is the letter of your CD drive), click **Install SQL Server 2000 Service Pack 3a**.

Note

- When you run SP3a Setup, if you receive a message that the Scm.exe file is in use, restart your server, and then begin installing SP3a.
2. On the **Welcome** page, click **Next**.
 3. On the **Software License Agreement** page, review the licensing agreement. To continue, you must accept the agreement.
 4. On the **Instance Name** page, clear the **Default** check box if it is selected. In the **Instance name** box, select **SHAREPOINT**.
 5. On the **Connect to Server** page, accept the default of **The Windows account name I use to log on to my computer with (Windows authentication)** unless you specified a different authentication mode in the previous procedure.
 6. Review the **Backward Compatibility Checklist** message. If you must modify the SP3a security enhancements, select the appropriate options. For details about each option, click **Help**. Click **Continue** after you have reviewed the security enhancements.
 7. When the **Error Reporting message** appears, select **Automatically send failed error reports to Microsoft**.
 8. On the **Start Copy Files** page, click **Next**.

9. When a message appears prompting you to back up your databases, click **OK**. It is highly recommended that you complete a backup after installing Premium Technologies.
10. On the **Setup Complete** page, click **Finish**.
11. Open SQL Server Enterprise Manager (click **Start**, point to **All Programs**, point to **Microsoft SQL Server**, and then click **Enterprise Manager**), and register the SHAREPOINT instance of SQL Server. To do so, double-click **Microsoft SQL Server**, right-click **SQL Server Group**, and then click **New SQL Server Registration**. You must enter the server name as **Servername\SHAREPOINT**. For the authentication mode, use Windows Authentication.

Notes

- If you encounter an error while trying to upgrade the instance of SHAREPOINT, ensure that the **MSSQL\$SHAREPOINT** service is stopped. To do so, click **Start**, click **Run**, and then type **Services.msc**. If the service is not stopped, right-click the service name, and then click **Stop**. After the upgrade is complete, you must ensure that the service restarts.
- MSDE SP3a is applied to the instances of SQL Server 2000 Desktop Engine (MSDE) that were installed during Windows Small Business Server 2003 Setup.

[Back to Top](#)

SQL Server Collation Settings

It is recommended that you use the default settings for installing SQL Server unless you need to specify collation settings. You must specify a collation setting if you meet one of the following criteria:

- **You are using a business application that depends on settings from a previous version of SQL Server.** Check the documentation for your business application to verify which collation settings are required.
- **You must match the Windows locale of another computer, or you must match the collation settings of another instance of SQL Server.** If SQL Server is in a language different from the client computers connecting to the database, you must specify a Collation Designator and then select the name of a specific Windows collation from the list. You can then specify a Sort Order option to use with the selected Collation Designator.
- If you are unsure about which collation settings to use, click **Help** on the **Collation Settings** page, and then click **Windows Collation Designators**. If you are unsure of the sort order, click **Windows Collation Sorting Styles** in Help.

To verify the Windows locale of another computer

1. On the other computer, click **Start**, click **Run**, and then type **Control** to open Control Panel.
 2. Double-click **Regional Options** (also called **Regional Settings** or **Regional and Language Options**). A dialog box appears.
 3. Note whether the locale of the other computer is different from your Windows Small Business Server locale. If the locale differs, use the table in the "Windows Collation Designators" Help file to find the corresponding Collation Designator.
- **The collation settings must match those of another SQL Server installation.** To match an earlier version of SQL Server, select SQL Collations (used for backward compatibility with previous versions of SQL Server). The default setting for the locale of your operating system will appear in the collation settings list box.

It is important to consider the following information about collation settings:

- Many server-to-server activities can fail if the collation settings are not consistent across servers.
- You can change collation settings after running Setup, but you must rebuild the databases and reload the data.
- It is recommended that you verify the necessary selections for Collation Designator and Sort Order with the collation settings for the other installation of SQL Server.

To verify collation settings

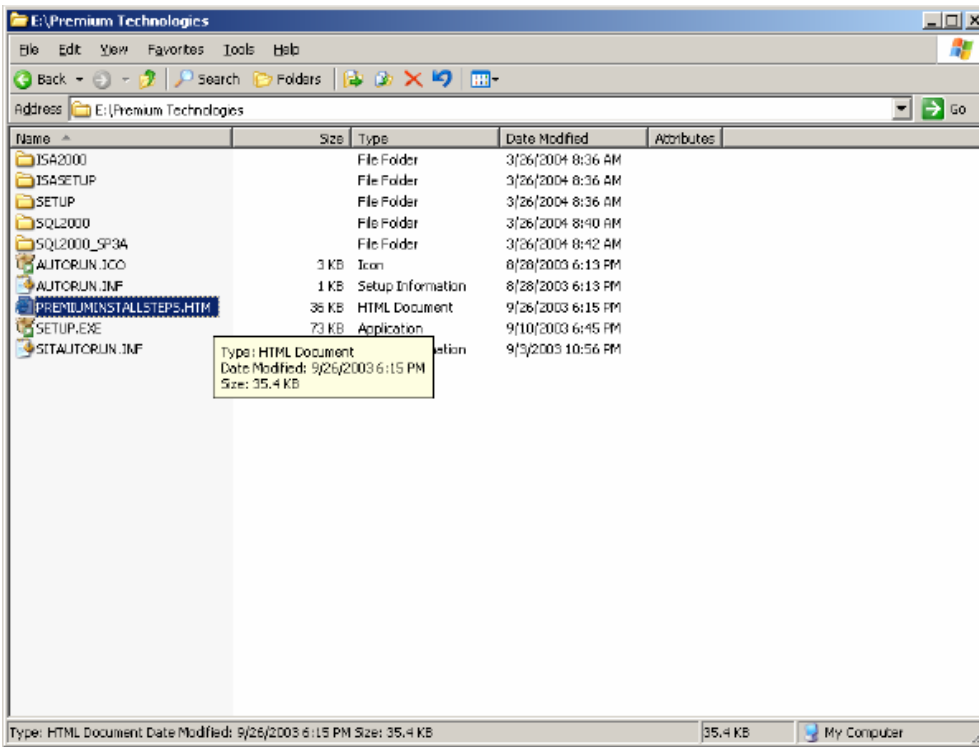
1. From the computer that is running SQL Server, open Query Analyzer (click **Start**, point to **All Programs**, point to **Microsoft SQL Server**, and then click **Query Analyzer**).
2. In the **Connect to SQL Server** dialog box, select the SQL Server for which you want to verify the collation settings, and then specify the authentication information for the connection. A dialog box appears.
3. In the query pane, type:

sp_helpsort

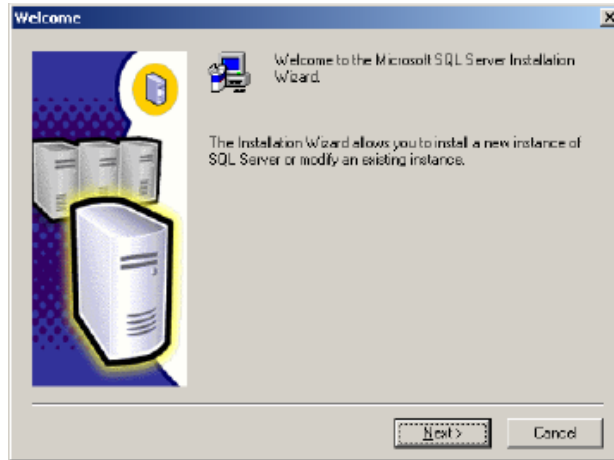
go

4. Press **Ctrl+T** to show results in text, and then press **F5** to run the commands.
5. Your server's default collation settings will be displayed in the results pane of the query window.

[Back to Top](#)

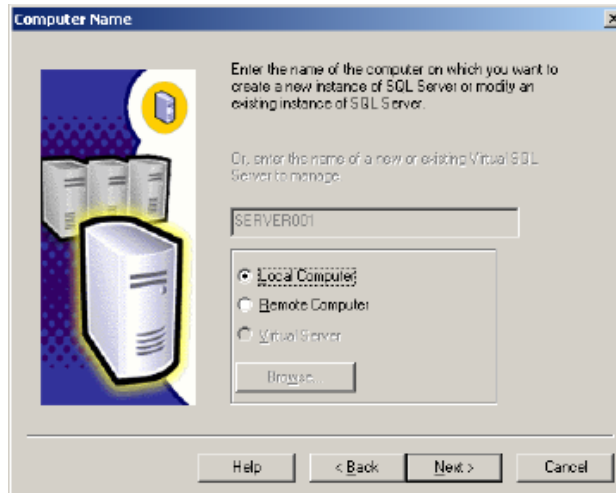


4. If this is a new install follow these directions, Insert the Premium Technologies CD, it should autorun, if it doesn't click your CD Drive and click autorun file located in the root of CD. You will see a screen that looks like this:



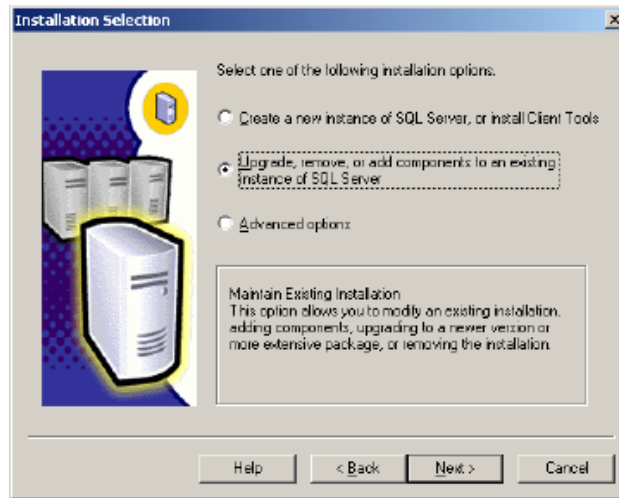
Click Next.....

Now choose Local Computer:



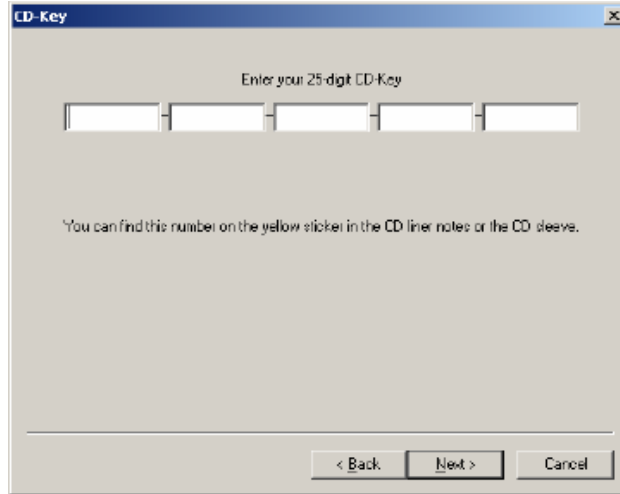
Click Next....

On this next screen we want to choose Upgrade, remove, or add components to an existing instance of SQL Server.



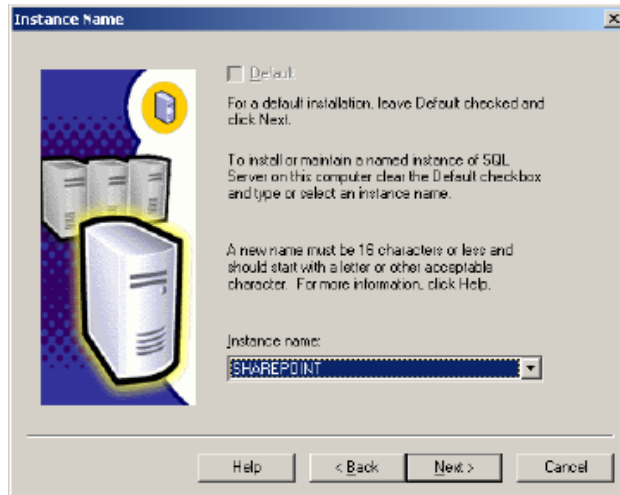
Click Next.....

Insert your CD key now, you can find this key on the Small Business Server 2003 CD Case or if this is an OEM Computer it should be a sticker on the side of the computer/server.

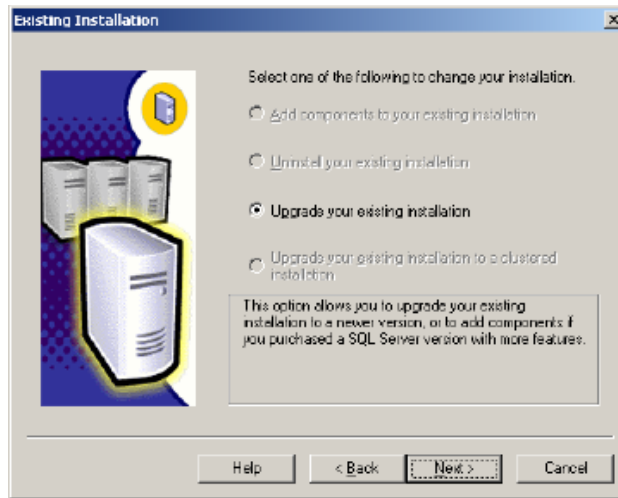


After typing your CD key click next.....

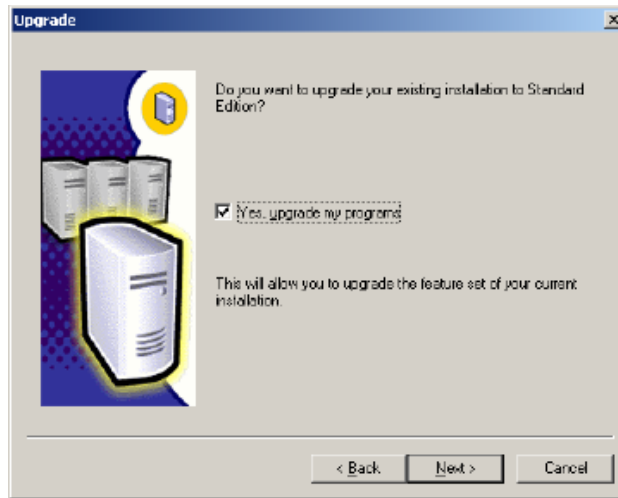
This next screen is going to ask you which instance name to install SQL too. Choose SHAREPOINT.



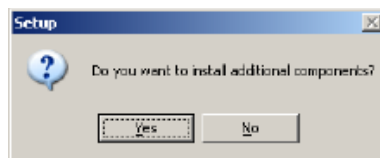
Click next.....



Choose Upgrade your existing installation and click next.....

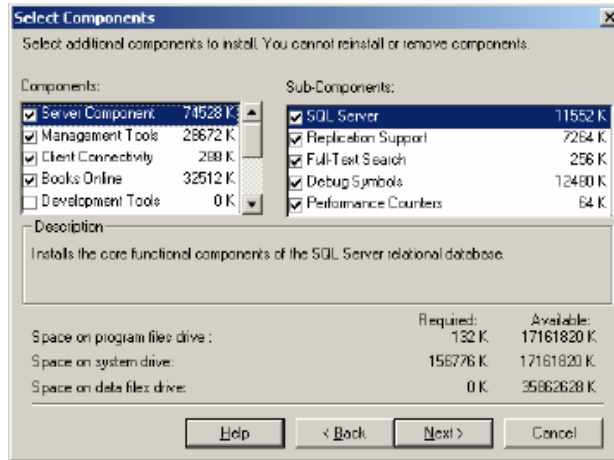


Obviously you have no other choice here other than to choose Yes upgrade my programs. Click next.....

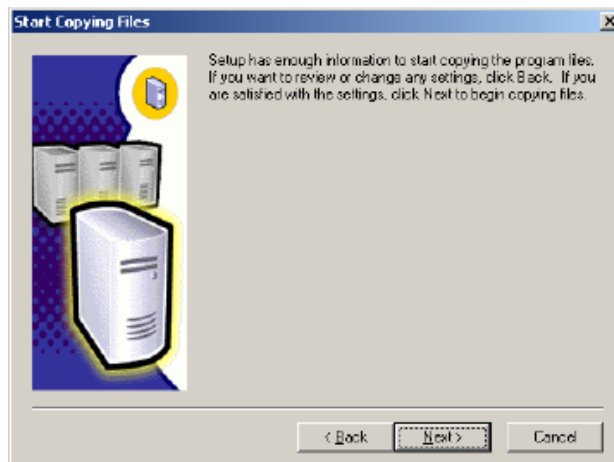


Choose yes.....

On the select components screen select Server Component and choose Full Test Search from the right. You can also choose Management Tools and Books online, as Microsoft recommends.



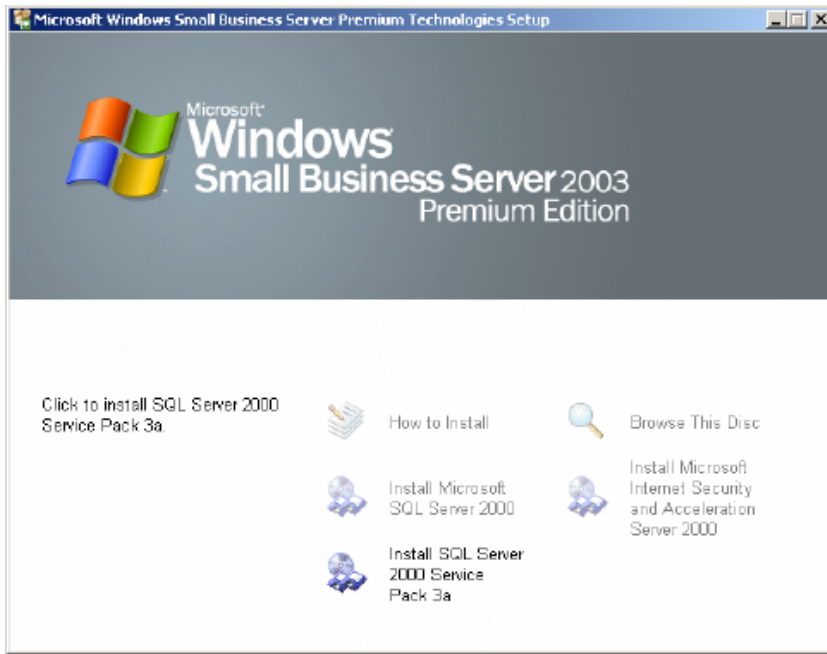
Click Next.....



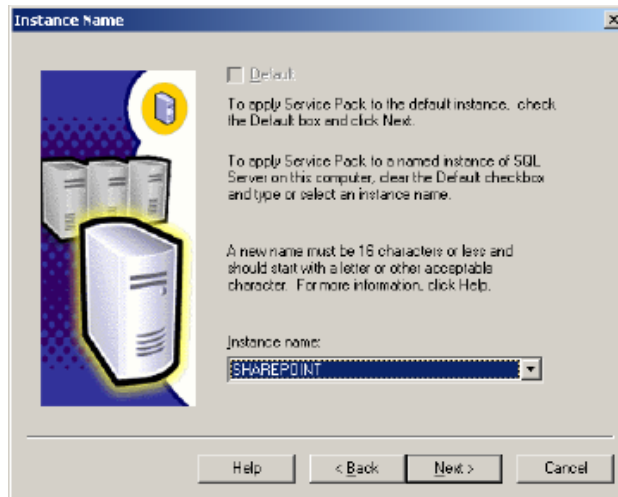
Click next.....

SQL is finally installing, but we are not finished yet, we still have to upgrade MS SQL to SP3.

Once setup is complete install SQL Service Pack 3

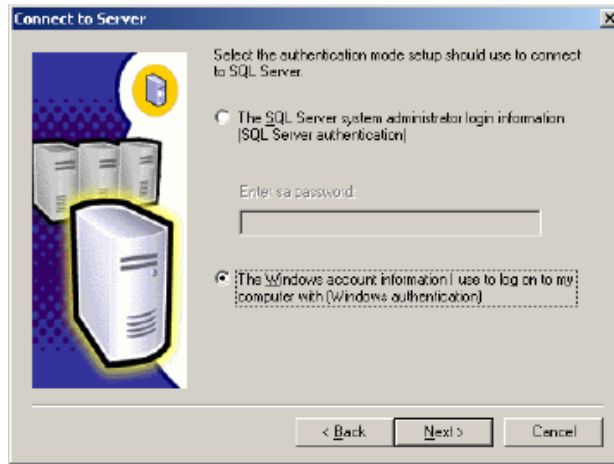


Installation of SP3 is almost the same as installing SQL, when you see the next screen choose SHAREPOINT again,

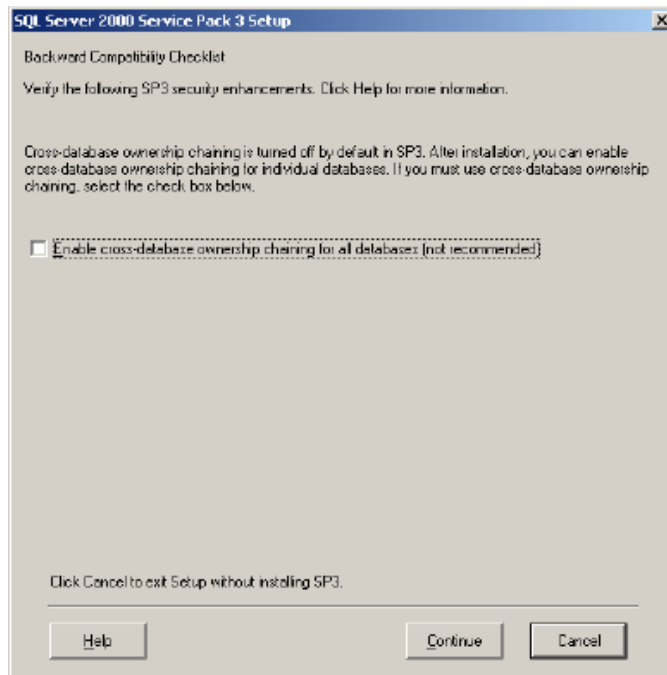
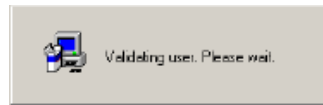


Click next.....

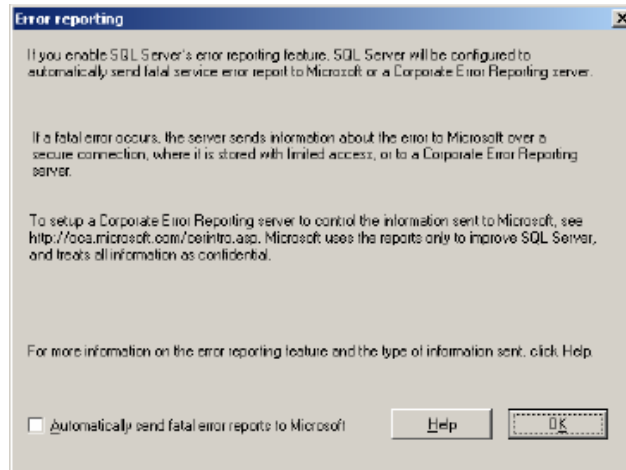
Now in this setup we are going to choose Windows Authentication, we will change this later.



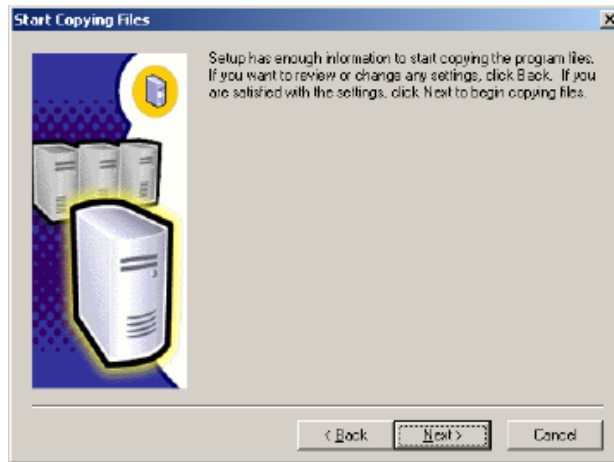
Click next.....



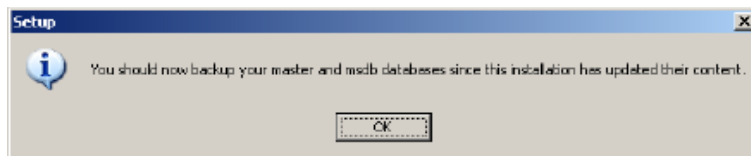
Do not check mark this box, click continue.....



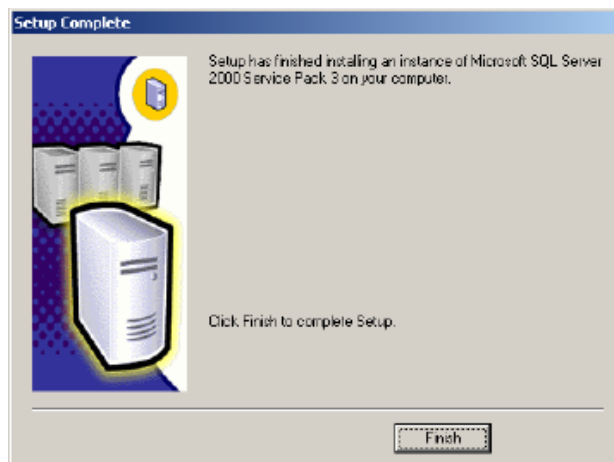
Who sends anything to Microsoft? Click OK.....



Click Next..... Depending on the speed of your computer/server this will take some time. Be patient, we are NOT almost done!!! Once complete you will see a screen asking you to backup, you can do this after we finish.



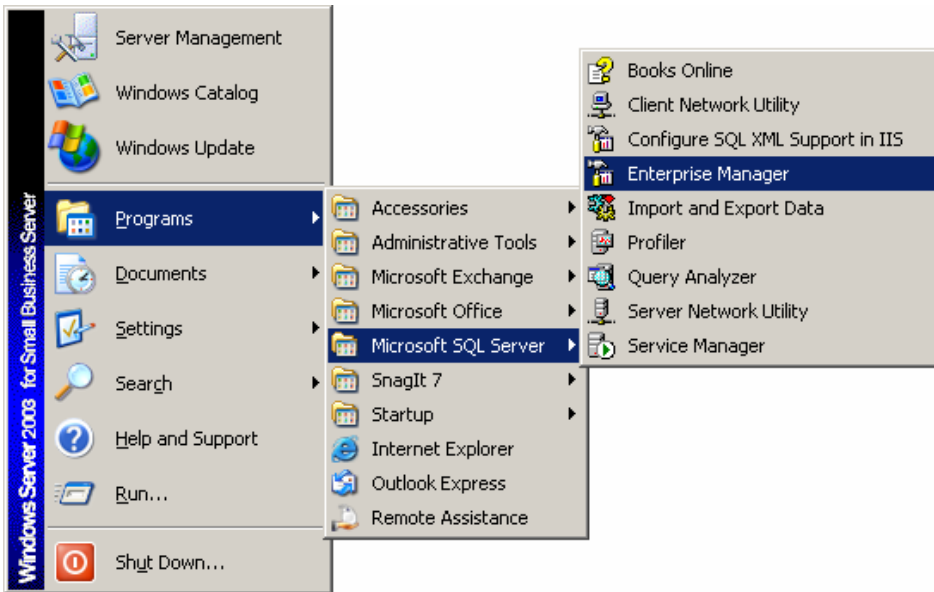
Click OK.....



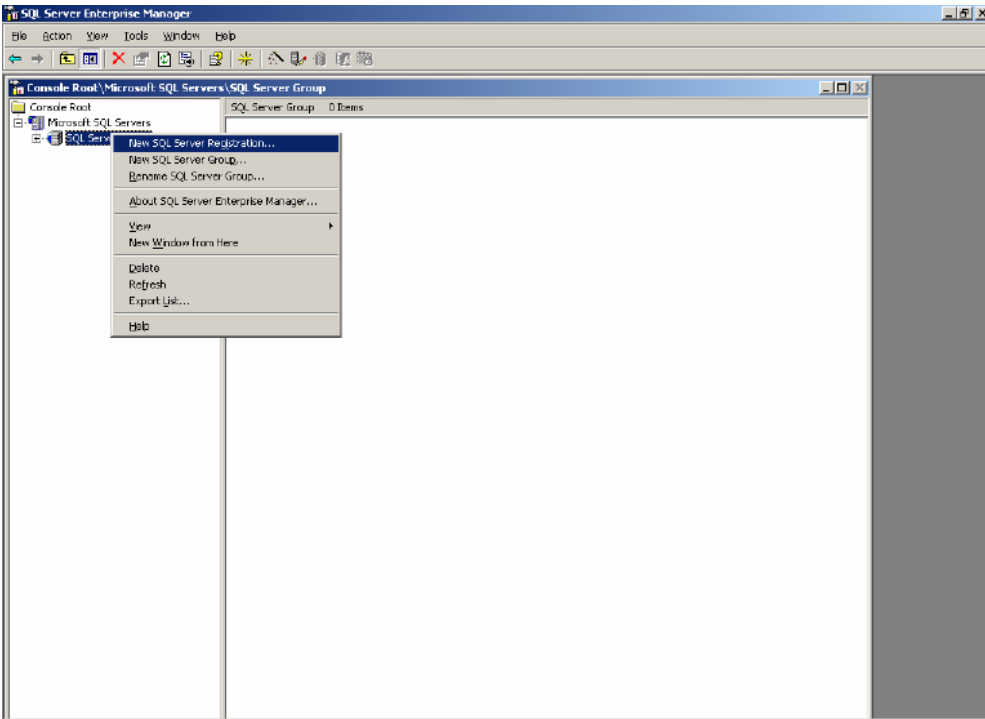
Click Finish....

Restart your Server.....

Now Click Start, Programs, Microsoft SQL Server, Enterprise Manager.

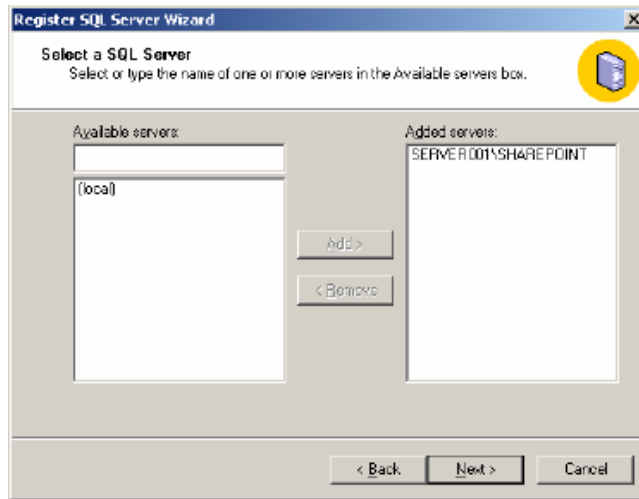


Expand the Microsoft SQL Servers Group. Right click on SQL Server Group. Choose new SQL Server Registration.

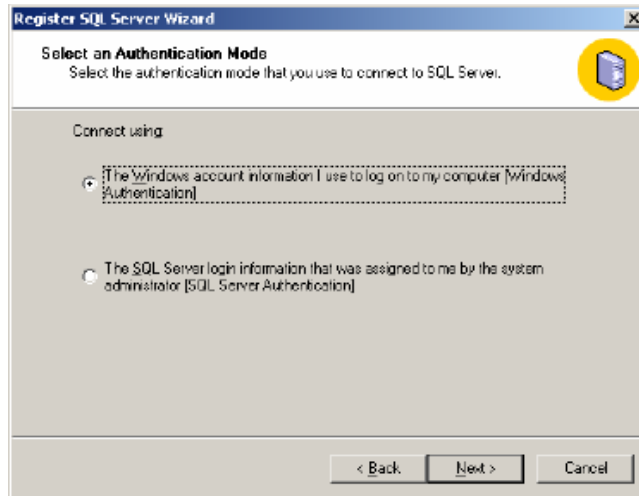


Click Next.....

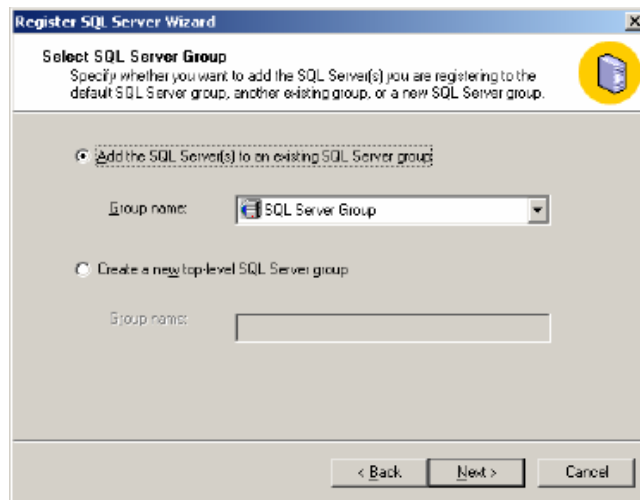
You will now see a screen asking you to select on or more available servers. You should see your server name on the left hand panel. Mine is “SERVER001”. In the Available Servers box add a \SHAREPOINT to server name and click add.



Click next.....



I choose Windows account again. Click next.....



Choose Add the SQL Server to an existing SQL server Group

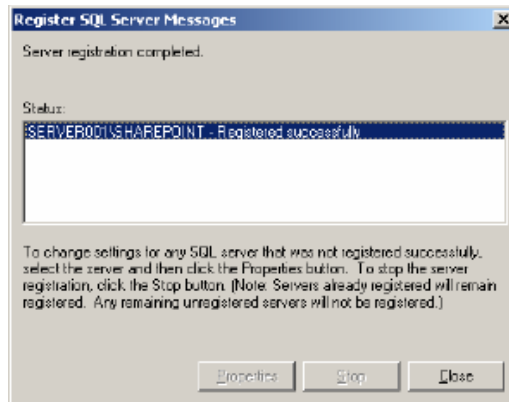
Click Next.....

You should now see a screen listing SERVERNAME\SHAREPOINT.



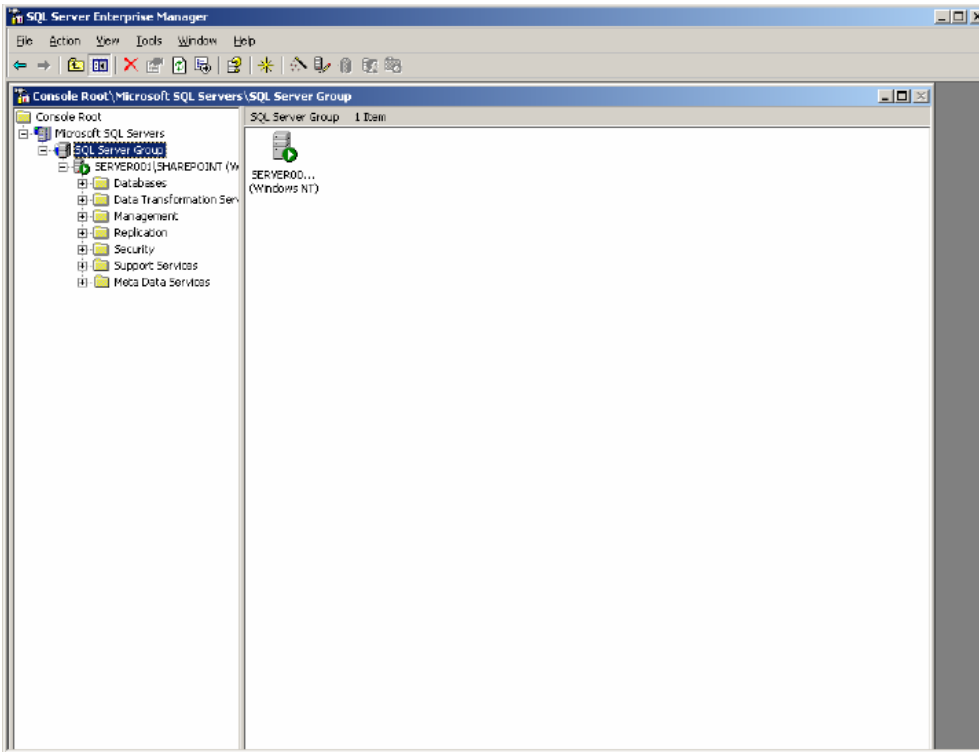
Click Finish.....

You will see a screen like the one below telling you that SERVERNAME\SHAREPOINT – Registered Successfully.

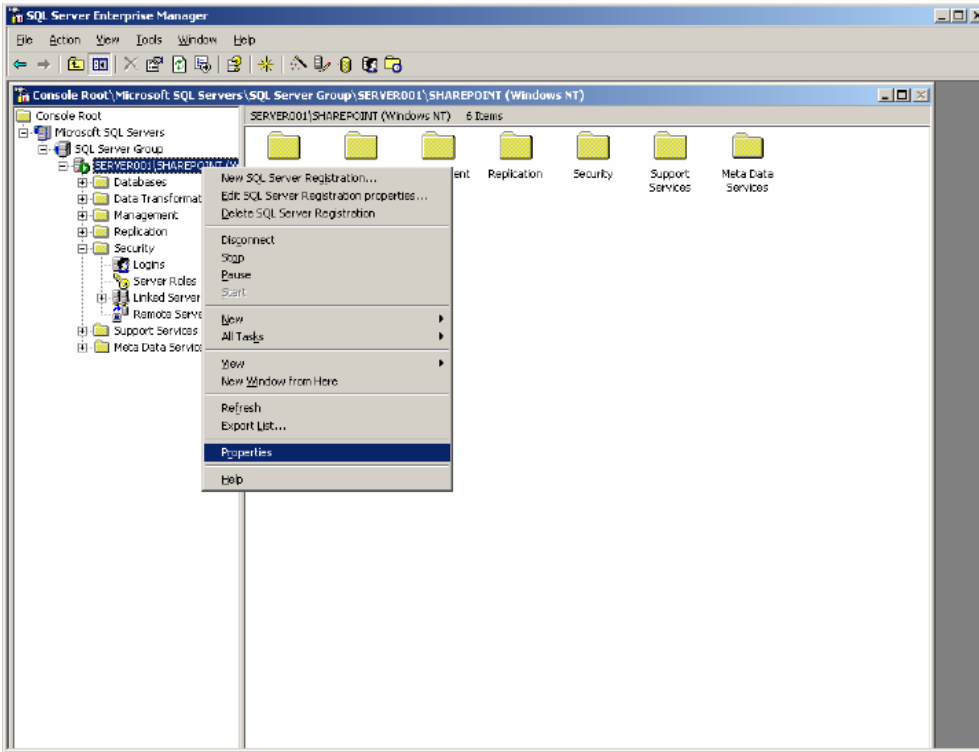


Click Close

You will notice that SERVERNAME\SHAREPOINT has started.

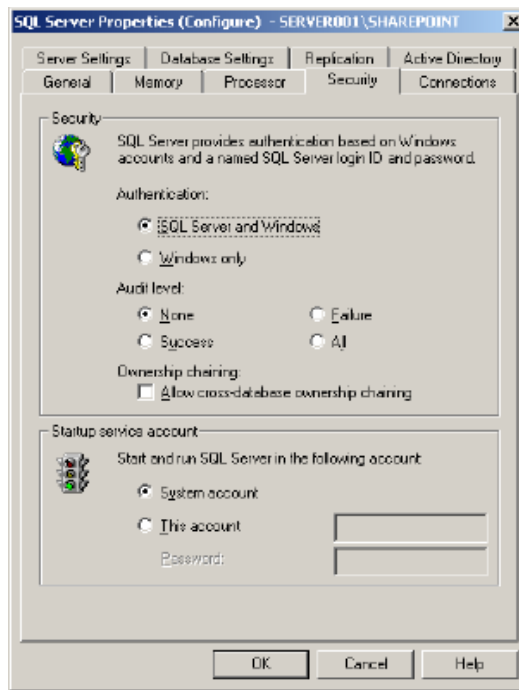


Now Right click on SERVERNAME\SHAREPOINT



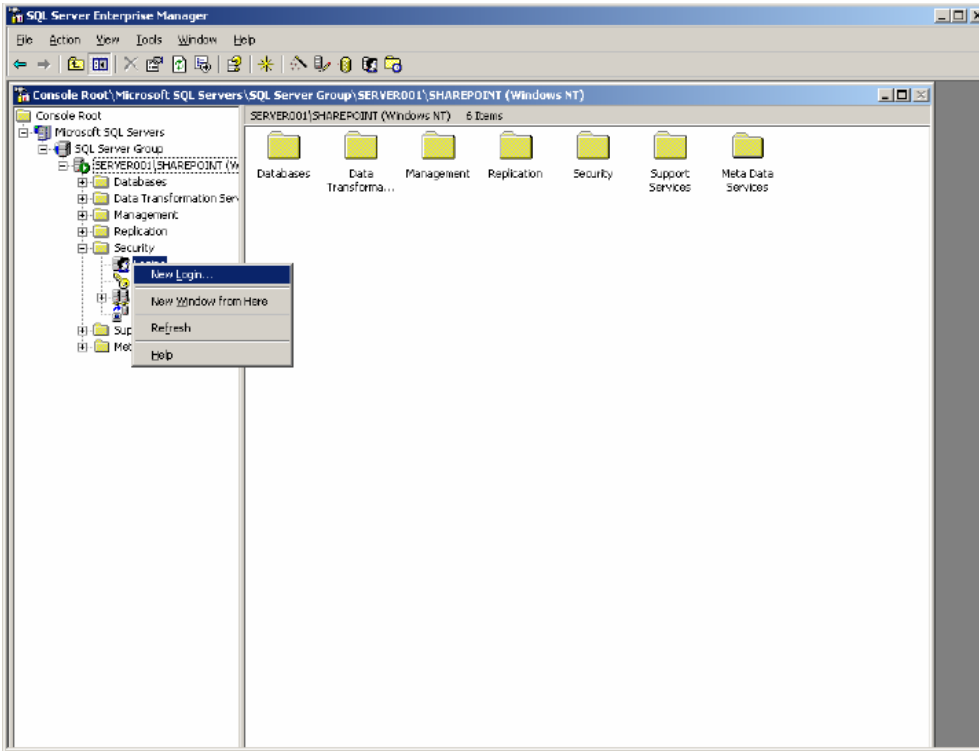
Click properties.

Click on the security Tab

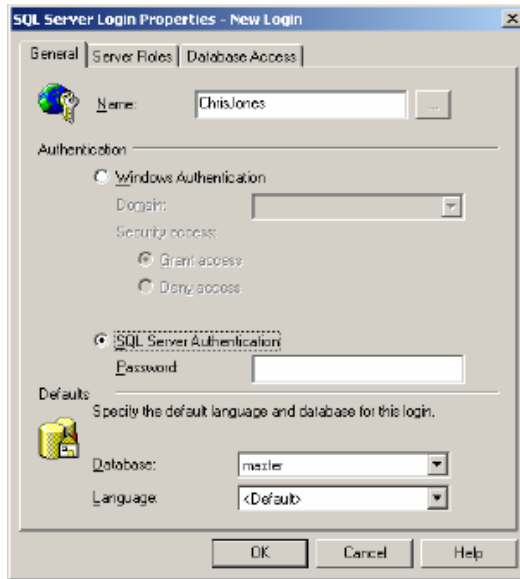


Choose SQL Server and Windows follow the prompts and enter the password of one of the users you created in the user manager. Click OK to continue.

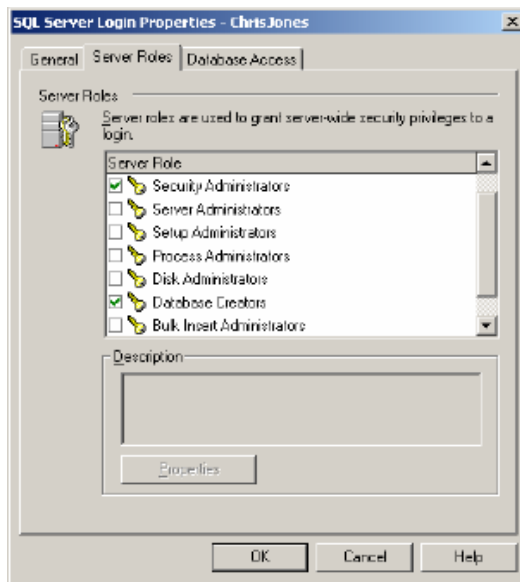
Now under the SERVERNAME\SHAREPOINT expand the Security Folder and right click on the new login menu.



Choose the user you created in User Manager and click SQL Server Authentication.



For the database “master” is fine. Now click on the Server Roles Tab.



Make this user a Database Creator and a Security Administrators. Click ok.

You can now exit the SQL Server Enterprise Manager.

Stage two (Project Server 2003 Install)

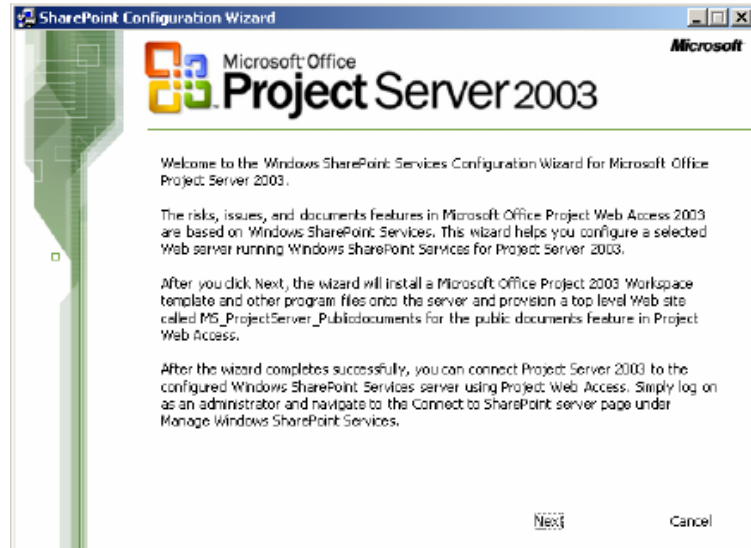
1. Start by inserting you Project Server 2003 CD into your computers CD ROM Drive. It should auto-run, if it doesn't browse to your CDRom drive and double click setup.exe.



Start by clicking Microsoft Windows SharePoint Services icon.

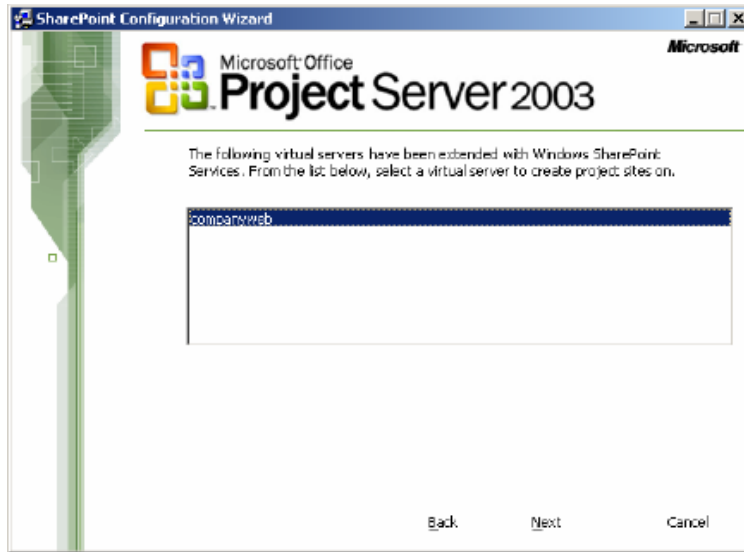


Now click Windows SharePoint Services Configuration Wizard.

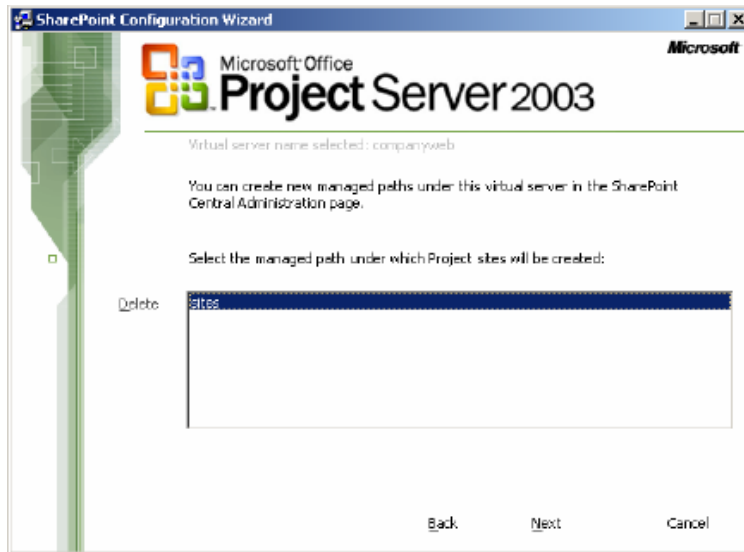


Click Next.....

Now here is where your screen may show something different.



Choose “companyweb” and click next to continue.



Choose “sites” and click next to continue.

This next screen is where you will need to put in one of the user accounts you created earlier with the administrative privileges. Notice I left the secondary Owner information blank, this is of little importance.

SharePoint Configuration Wizard

Microsoft Office
Project Server 2003

Enter the following information for the site: (Items with a * require an entry)

*Site Owner User Name: seals1\ChrisJones
(Example: DOMAIN\name or MACHINE\user)

*Site Owner E-mail address: chrisjones@seals1.local
(Example: someone@example.com)

Secondary Owner User Name:

Secondary Owner E-mail Address:

Select a Project Workspace: Project Workspace

Select a Site Quota Template: No Quota

Back Next Cancel

Click next to continue.

SharePoint Configuration Wizard

Microsoft Office
Project Server 2003

We now have enough information to configure Windows SharePoint Services.

Setup will proceed to copy SharePoint Web template files created specifically for Microsoft Office Project Server 2003.

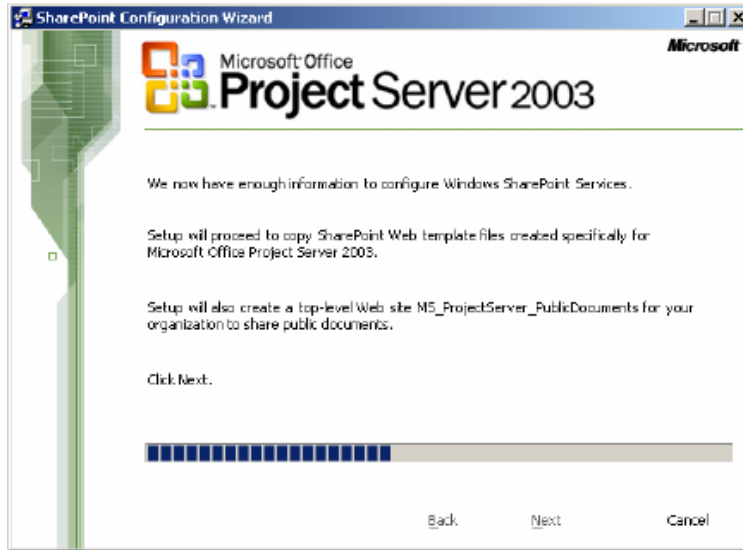
Setup will also create a top-level Web site M5_ProjectServer_PublicDocuments for your organization to share public documents.

Click Next.

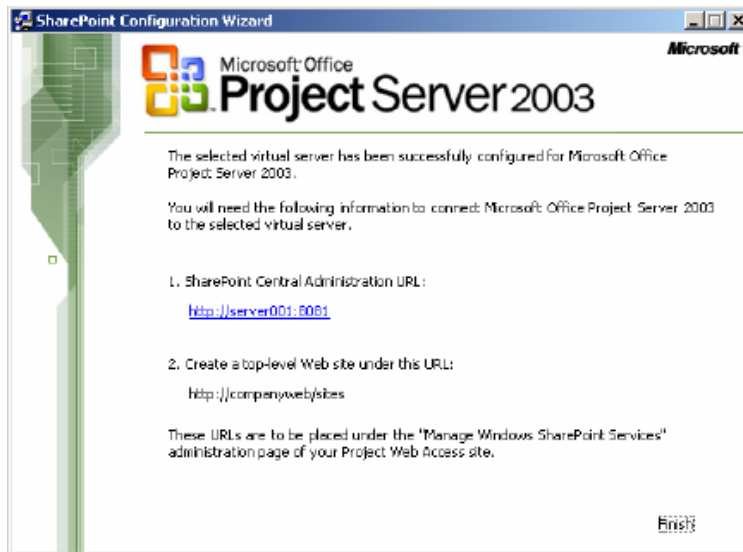
Back Next Cancel

Click next.....

You will now see a dialog box, click ok I forgot to capture it.



Now this information needs to be written down for future use, alternatively you can replace my servername with yours if you don't write down.

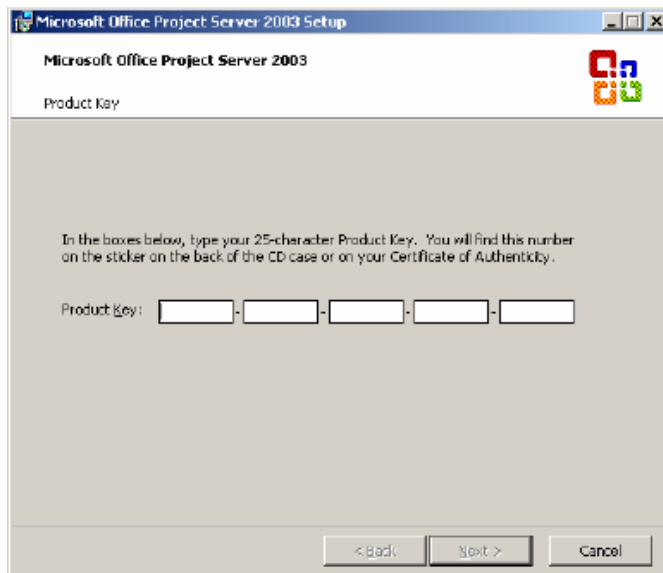


Click Finish.

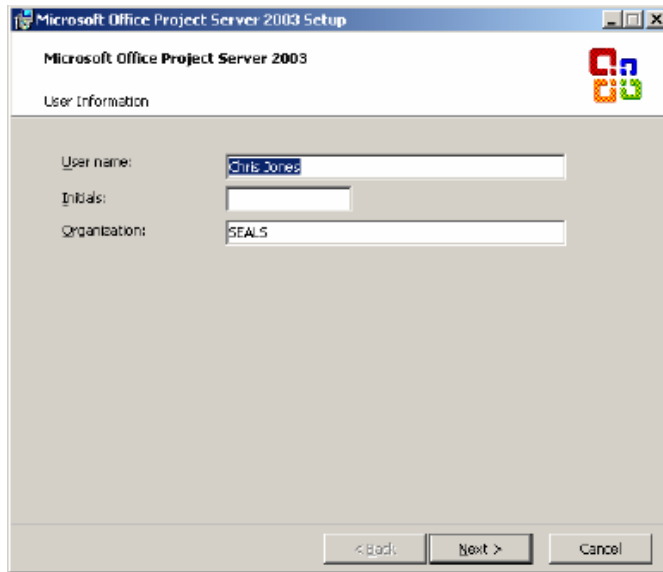
Now browse to your CDROM drive again and click setup.exe to restart installation if it exited like mine.



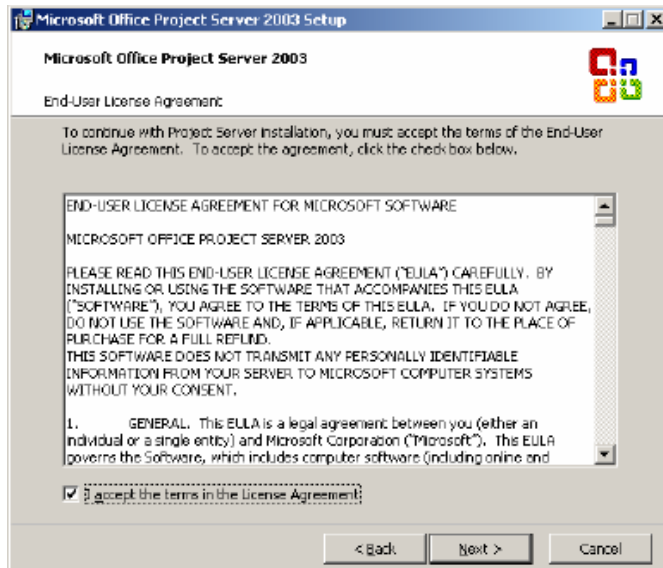
Select Server Installation



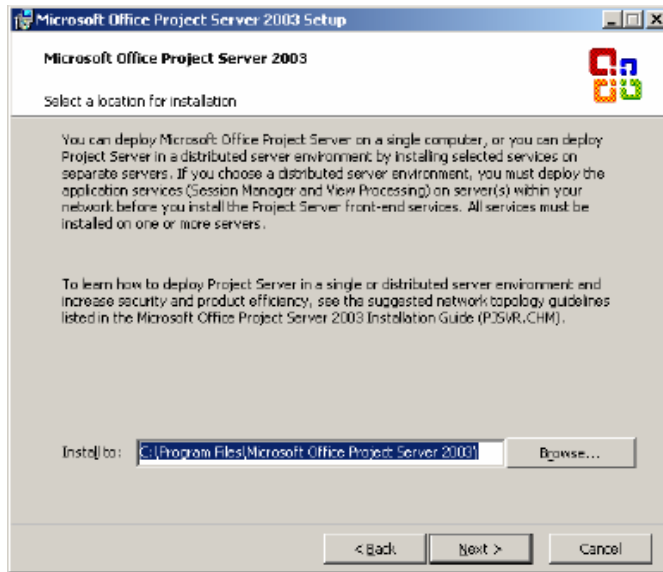
Insert your Product ID, and no I wont give you mine!!!



Enter your company information if you want. Click next....

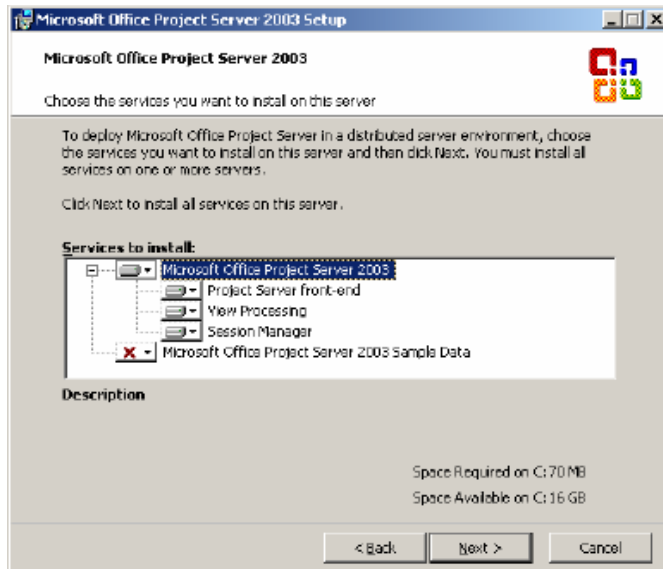


Accept the EULA, if you don't, you wont get far. Click next.....



Choose the default installation location unless you just feel like installing elsewhere.
Click next....

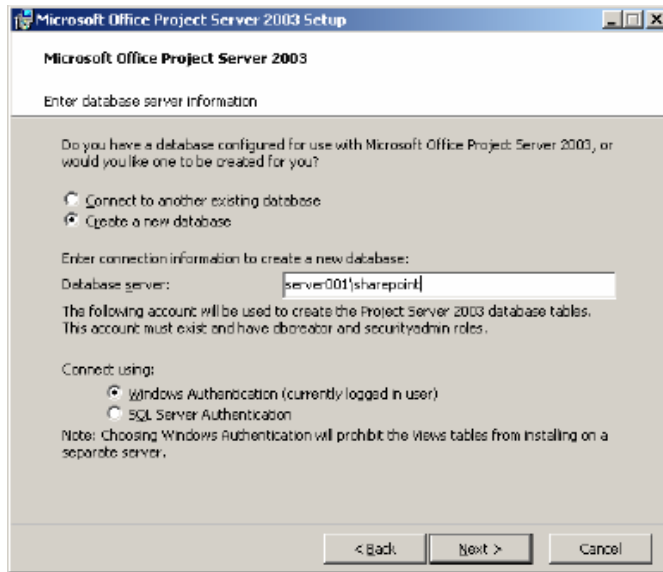
This next step is totally up to you, I choose the defaults so you should too.



Click next...

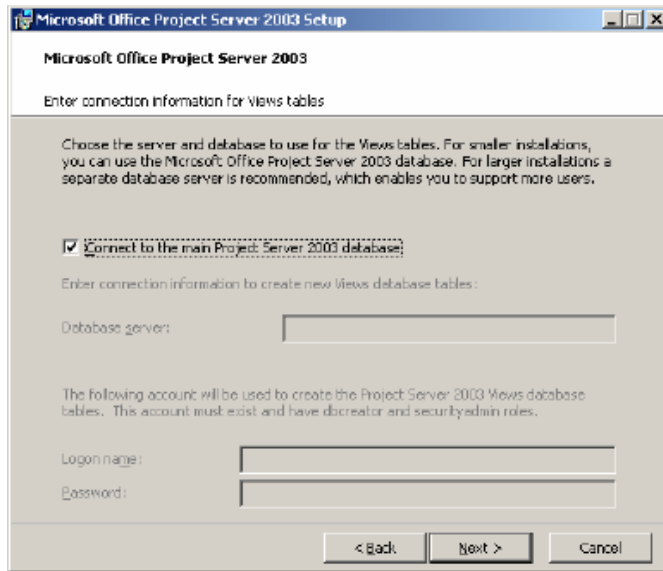
Now here is where I deviate from the instructions, building on existing SQL database structure. Enter your server name in following format

Servername\sharepoint Choose to use SQL Authentication



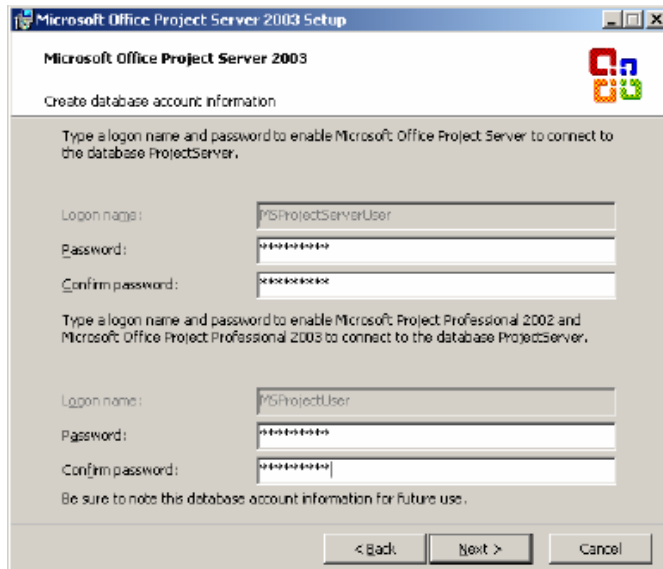
Click next....

Accept default on this screen.



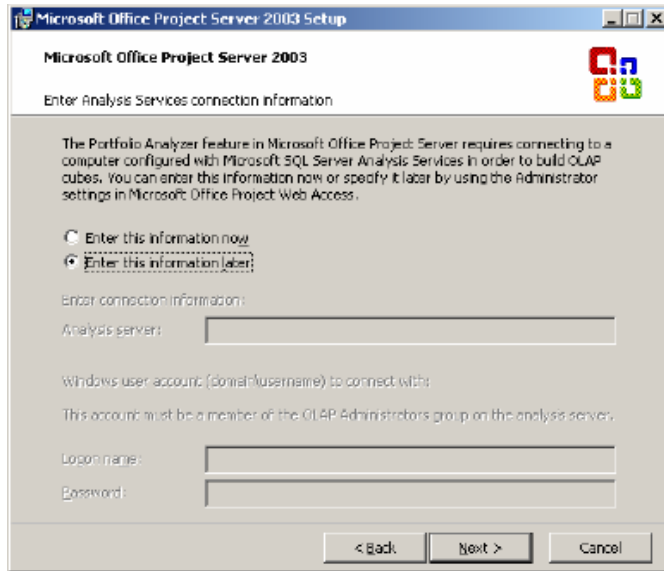
Click next.....

On this next screen add the password of the user you setup in the user manager and for SQL database administrator.



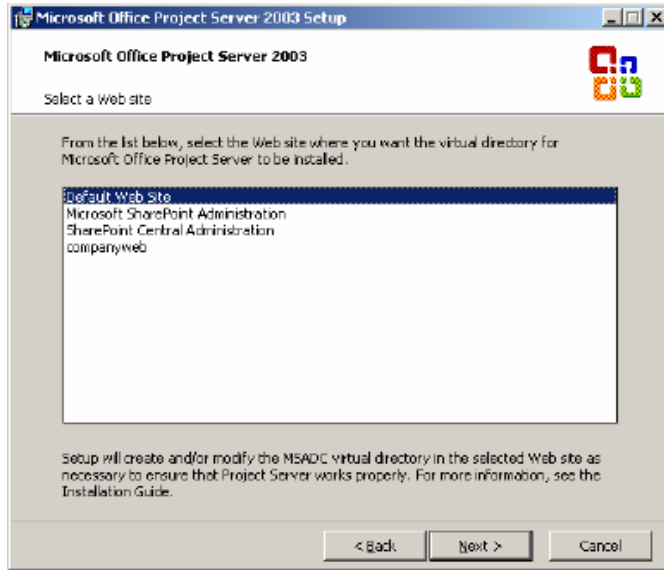
Click next....

On this next screen , we have to Select Enter this information later, we do not have an analysis server.



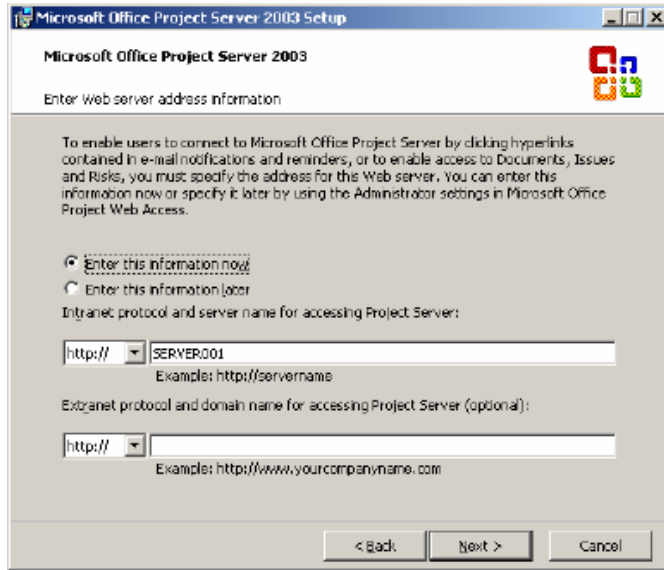
Click next...

Here we have several Web Sites to choose from, we are going to choose “default web site” as this is the only way this will work.



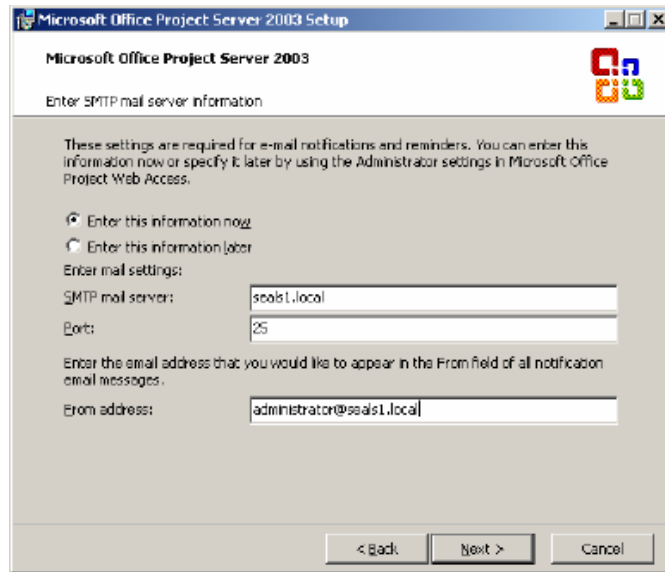
Click next....

In next screen enter only your server name in the first line, you can set the other later if needed. Extranet is not important to me right now so I didn't enter anything. You may wish to enter this information if needed.

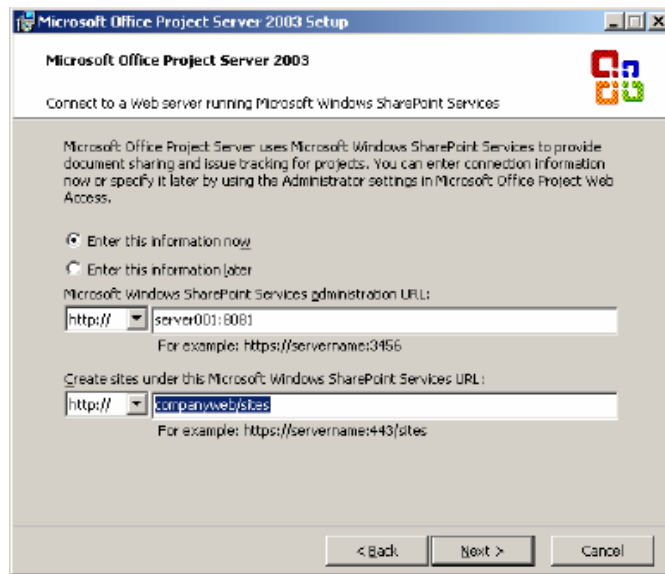


Click next.....

Now its time to enter some mail settings, you can skip this step and setup later or enter now like I did. As you can see, I have not setup a mail server, other than seals1.local, if you ran the internet connection wizard this would be your normal domain name. IE:
yourcompany.com



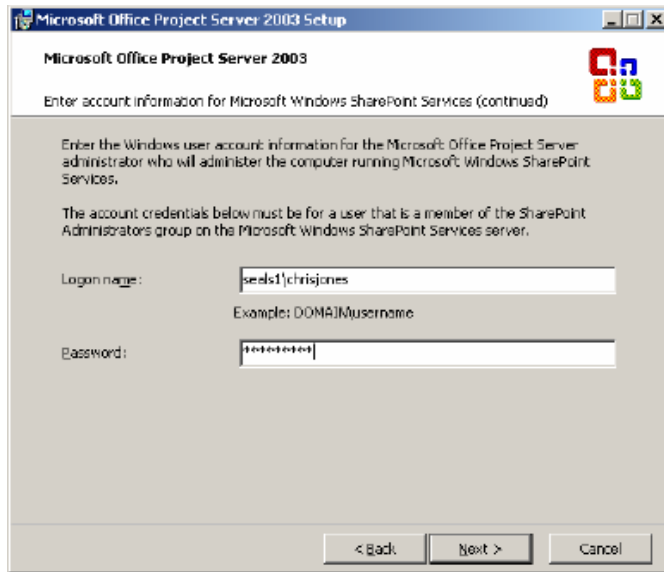
Now its time to enter the site information I asked you to write down earlier in the instructions.



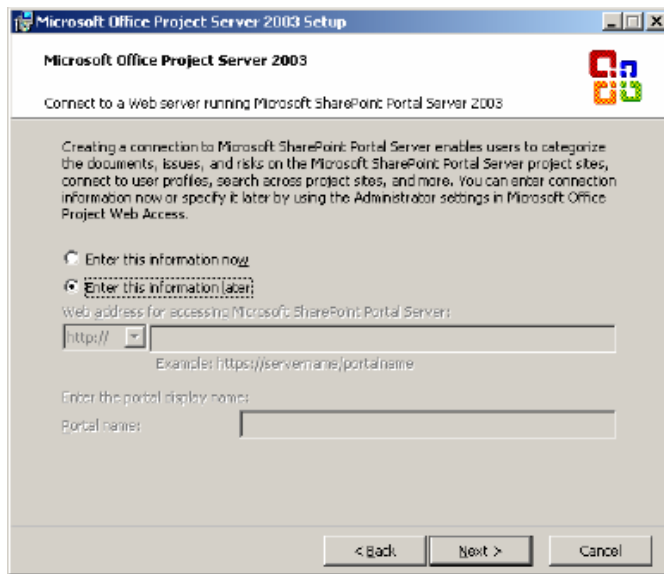
Comment [CJ1]: Edit this to be companyweb/sites instead of server001/sites

You can replace my servername with yours and for the second line enter <http://companyweb/sites>

Now its time to enter in Sharepoint administrator username/password

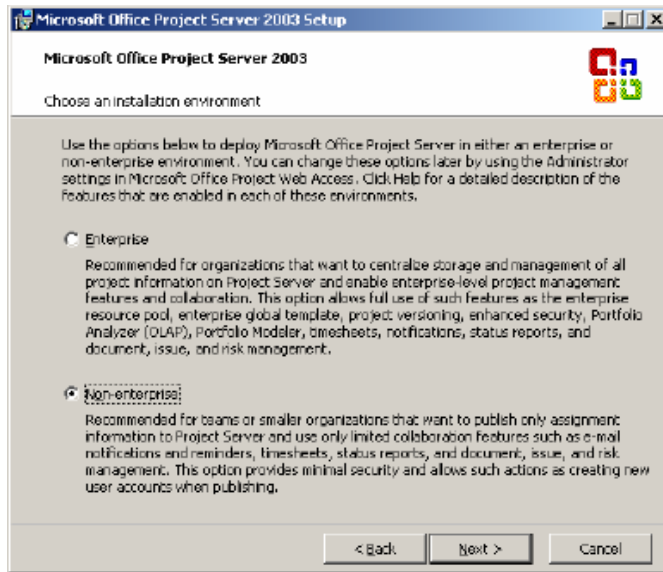


I used the same user as the one we setup in SQL Security. Click next.....
We don't have a Portal Server so choose enter this information later.



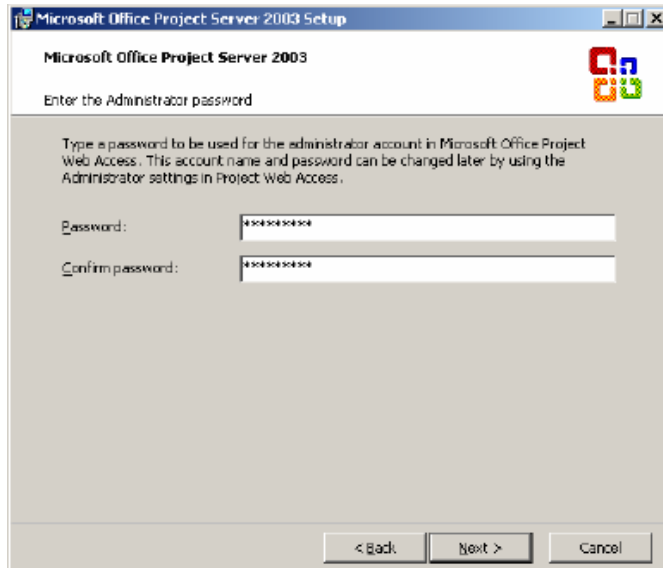
Click next....

Now in this screen we have to choose Enterprise or Non- Enterprise, SQL for SBS does not support these enterprise features, so choose Non-Enterprise.

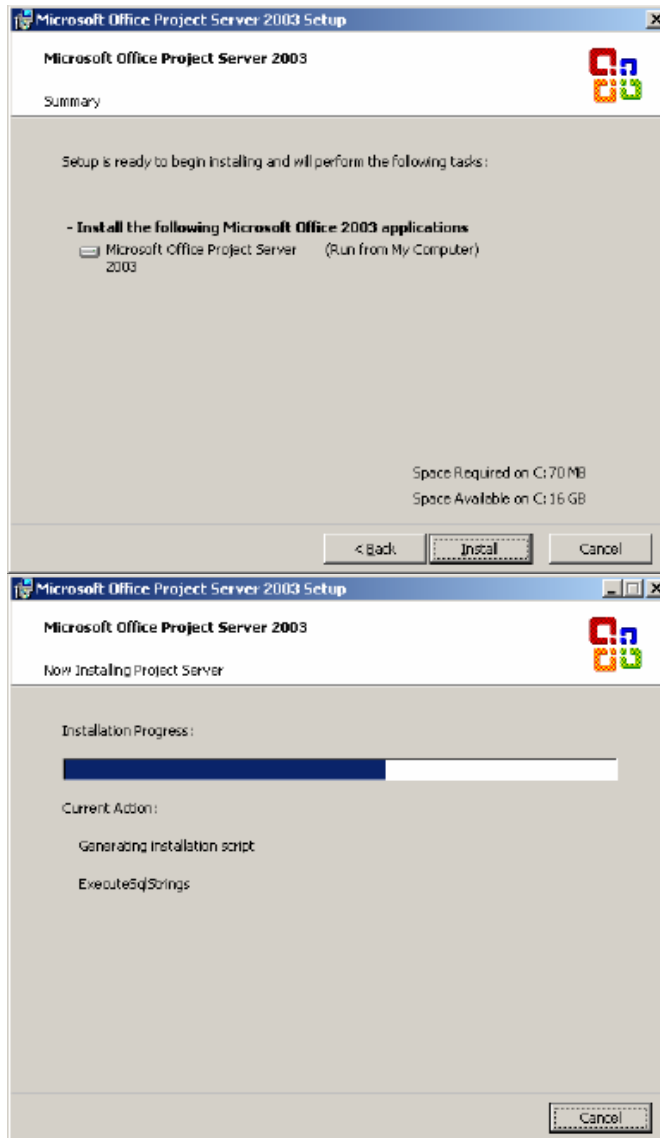


Click Next.....

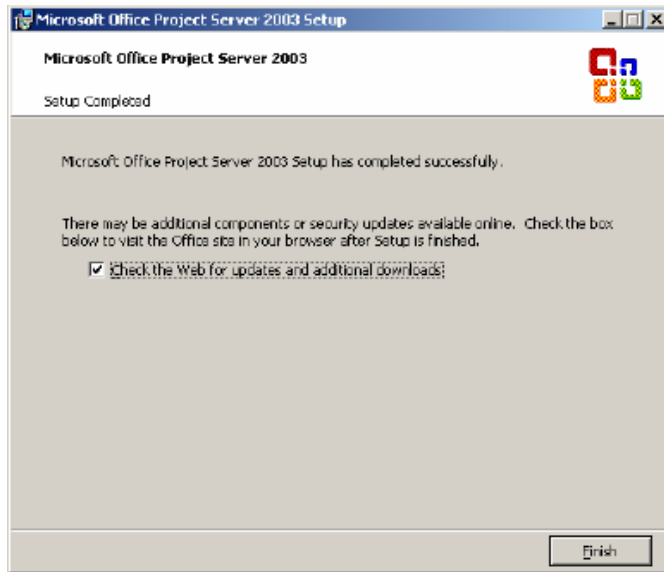
Now we have to enter Project Web Access Administrator password. Enter this password twice and click next to continue.



Click Next....

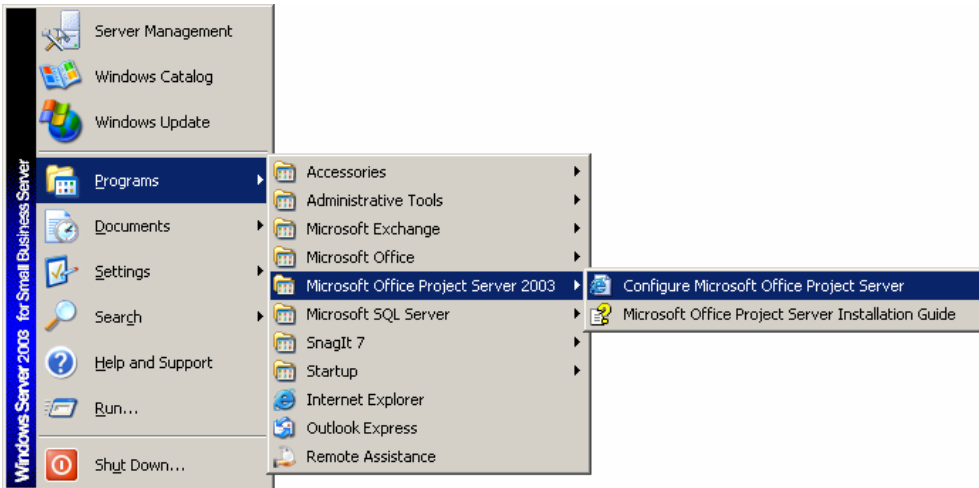


Congratulations setup has finished!!!



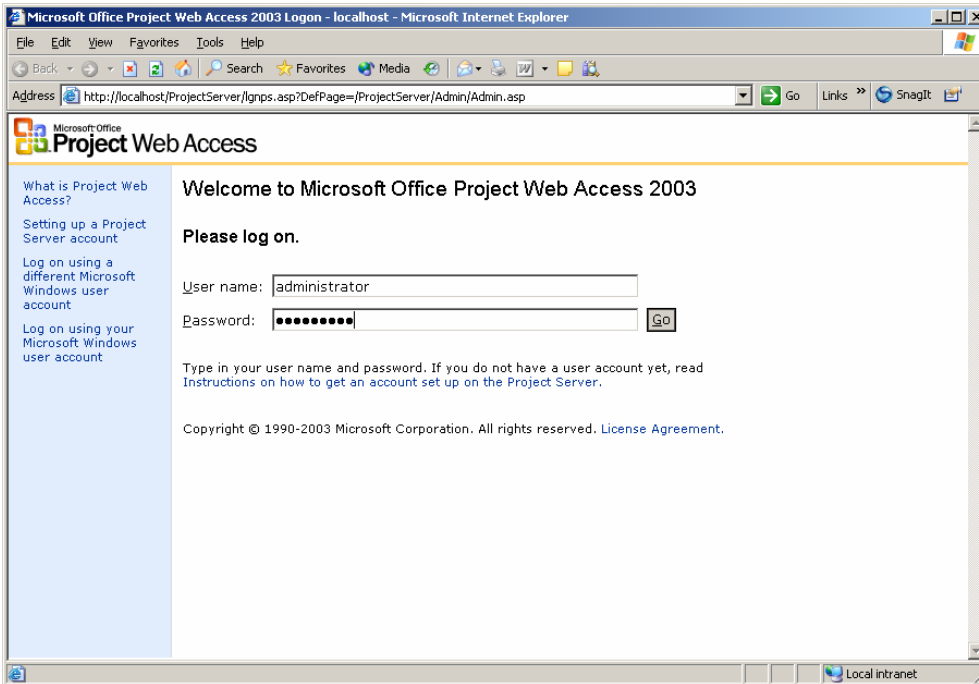
You can choose Check the web for updates and additional downloads and click Finish.

Now go to the Start Menu

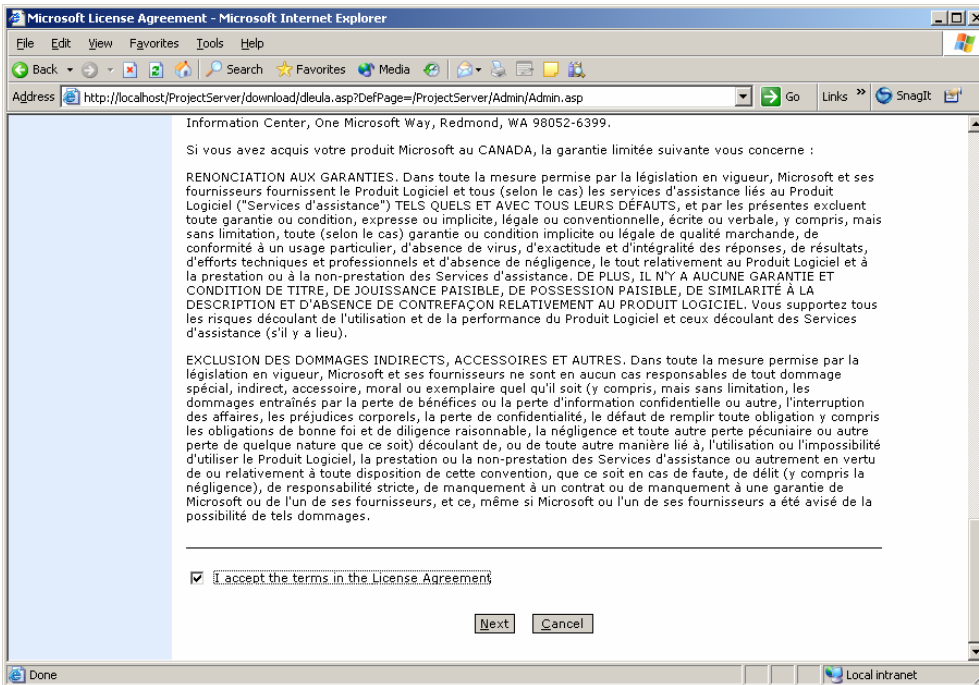


Click on Configure Microsoft Office Project Server

Now the Project server web pages comes up
Enter Administrator/password now...



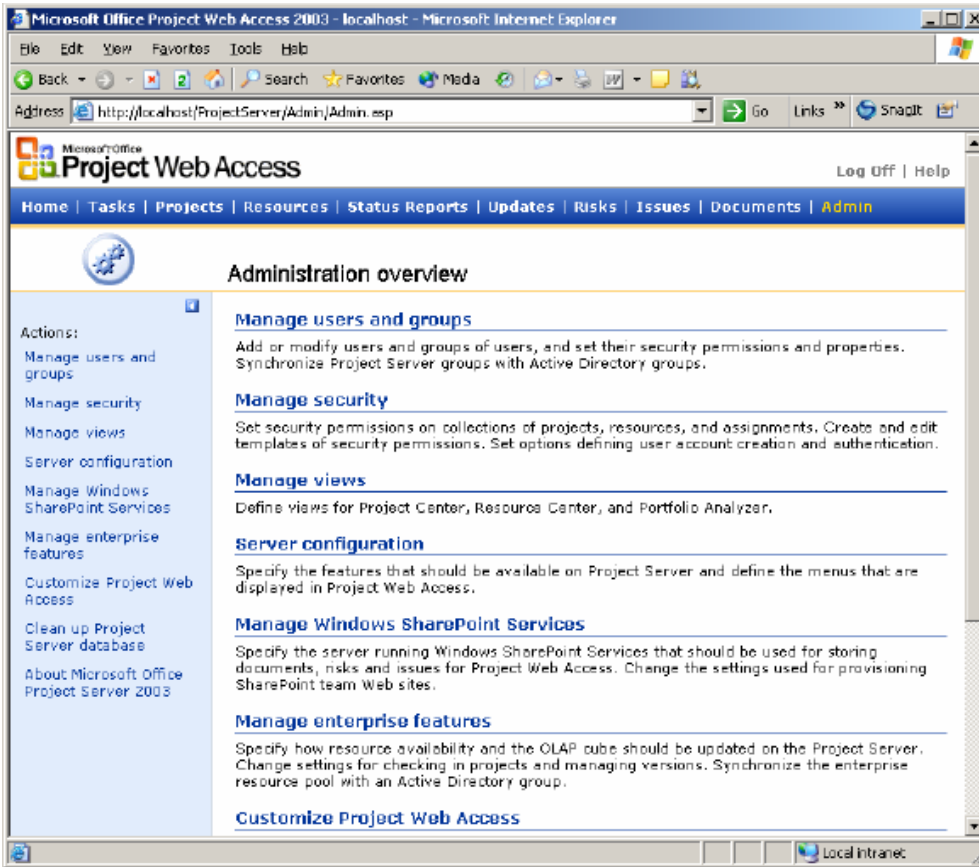
Click go or press enter.



Accept the EULA if you want to continue. Click next.....



Choose always trust content from Microsoft Corporation



Now you can manage your Project 2003 Server.

Thank you for using this document, if you find it useful or would like to make some changes, all I ask is that you please send me a new copy of any changes, so I may update to reflect these changes. This document was painfully created after multiple installs, newsgroups and a special person named Gregg, without Gregg I never would have gotten this far. Thank you Gregg for all your help.

You can contact me with the following email address.

Cka691@alltel.net